

GOOD LIGHTING DOES NOT COST, IT PAYS

Across the nation, energy costs continue to rapidly rise, while the increasingly competitive Food Processing industry requires an overall reduction in operating costs from each facility. Consequently, illumination requirements unique to the demands of each distinctive processing area make selecting the proper luminaire a challenge. Using the latest in optical, electronic, and thermal management technologies, Holophane's luminaires are designed specifically for Food Processing environments. As a result, Holophane helps to create a safe, sanitary, and usable environment with highly energy efficient lighting solutions for our customers.



HOLOPHANE®
LEADER IN LIGHTING SOLUTIONS

The One Source Solution for Food Processing and Beverage Plants

Holophane has been an innovative force in optical technology and lighting product development since 1898. Our Total Lighting Solution Offering is ideal for the food processing and beverage industry.

Holophane's Indoor product offering delivers optimal, efficient lighting performance in hostile corrosive environments including those that are classified as hazardous. High quality design and robust materials ensure that the luminaires operate in a broad range of applications and ambient temperature conditions.

The Outdoor product line offers a complete selection of luminaires to handle your site lighting needs. The outdoor luminaires are designed with strong mechanical attributes for ease of installation and maintenance and the optical systems ensure the best performance for roadway and area applications.



OUTDOOR PRODUCTS

FLOODLIGHTING AND SPECIALTY



Predator®
(Classified Location)



Prismbeam® II



Ultrak® Surveillance Camera



Mongoose®



Somerset®

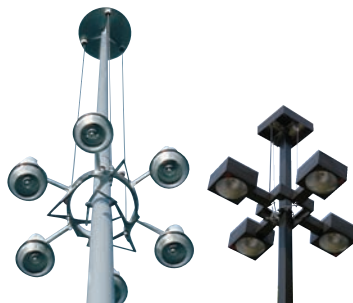


MirroStar®

HIGH MAST LIGHTING



HMAO™ Series



Lowering Devices

WALL MOUNT



Parkpak®



Wallpack® IV

INDOOR PRODUCTS

HAZARDOUS



Petrolume®



Petrolux® III Series
(P35 - Low Profile)



Petrolux® III Series
(P3M - Medium)



Petrolux® III Series
(P3L - Large)



Vantage® Series
(VH Hazardous)



Vantage® Series
(VZ Hazardous)

DEMANDING ENVIRONMENTS



Petrolux® III Series
(PWS - Low Profile)



Petrolux® III Series
(PWM - Medium)



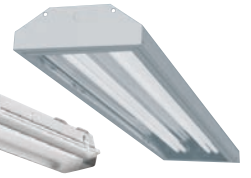
Petrolux® III Series
(PWL - Large)



Controlume®



HES



HEF



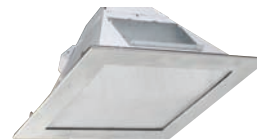
Vantage®



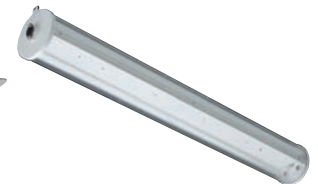
Vantage® ALT



Vantage® Mini



Vantage® RTT



Vantage® XT

EMERGENCY EXIT



DeLeon® HD



DeLeon® NM



DeSoto® M60



DeSoto® M40



Cortez® A2



Magellan® EC

GENERAL PURPOSE



Enduratron®



Prismalume®
Prismalume® Enclosed



Prismpack® V
Prismpack® V Enclosed



Bantam 2000® Series



IntelliBay®



IntelliVue®

For ordering and specification see product brochures and catalogs



HOLOPHANE[®]
LEADER IN LIGHTING SOLUTIONS

An **Acuity Brands** Company

Acuity Brands Lighting, Inc.

Holophane Headquarters, 3825 Columbus Road,
Granville, OH 43023

Holophane Canada, Inc. 9040 Leslie Street,
Suite 208, Richmond Hill, ON L4B 3M4

Holophane Europe Limited, Bond Ave.,
Milton Keynes MK1 1JG, England

Holophane, S.A. de C.V., Apartado Postal No. 986,
Naucalpan de Juarez, 53000 Edo. de Mexico

Contact your local Holophane factory sales representative for application assistance, and computer-aided design and cost studies. For information on other Holophane products and systems, call the Inside Sales Service Department at 740-345-9631. In Canada call 905-707-5830 or fax 905-707-5695.

Limited Warranty and Limitation of Liability
Refer to the Holophane limited material warranty and limitation of liability on this product, which are published in the "Terms and Conditions" section of the current Buyers Guide, and is available from your local Holophane sales representative.

Visit our web site at www.holophane.com

Luminaires may utilize fluorescent or high intensity discharge sources that contain small amounts of mercury. New disposal labeling for these lamps includes the mercury identifier shown on the left to indicate that the lamp contains mercury and should be disposed of in accordance with local requirements.



Information sources regarding lamp recycling and disposal are included on the packaging of most mercury-containing lamps and also can be located at www.lamprecycle.org.

Product specifications may change without notice. Please contact your local Holophane factory sales representative for the latest product information.

**experience
lighting's
best.**