



Factories



Warehouses

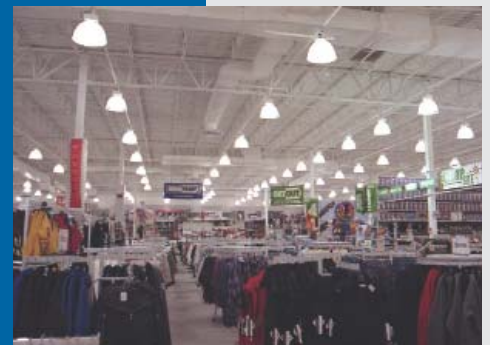
# Do You Want to Save Money on your Lighting?

*turn to...*

**HOLOPHANE®**

*One Company...One Contact*

*It's as easy as...* **1-2-3!**



Discount &  
Retail Stores



Government Facilities

# One Company...One Contact...

Holophane, with our Acuity Lighting Group affiliate, Precede Enterprises, Inc., provides customers Turnkey Installation Services for a variety of interior lighting upgrades. By combining Holophane's extensive product line with Precede Enterprises, Inc.'s project management experience we can offer superior lighting solutions for many types of indoor environments. Project types include multi-site retail to large industrial/warehousing facilities within a compact timeframe.

Holophane Turnkey Services are provided to our customers located in the continental U.S.



*It's as easy as 1..2..3...for Service you can depend on!*

## 1 Lighting Design and Economic Feasibility Study

- Preliminary lighting survey of the facility
- Lighting design with illuminance calculations
- General lighting layout suggestions
- Luminaire schedule of proposed new lighting system alternatives
- Economic feasibility study, including simple payback, potential utility rebates and ROI
- Leasing options are available if applicable

**The Lighting Design and Economic Feasibility Study are provided at "no cost" to our customer.**

Upon completion of the Lighting Design and Economic Feasibility Study Phase, a decision can be made to move the project forward. If the project is approved, then Precede Enterprises, Inc. will conduct a Detailed Audit and Installation Analysis.

## 2 Detailed Audit and Installation Analysis

### • Site Audit

This phase requires a Precede Enterprises, Inc. Representative to spend time in the facility gathering detailed information of the facility environment, existing luminaire types, existing lighting locations and mounting details.

In the event that new information is garnered during the Site Audit that would impact the Lighting Design or Economic Feasibility Study, then Holophane will update these documents to reflect this new information.

### • Proposal Turnkey cost and Scope of Work

Upon completion of the site audit a proposal including a detailed scope of work will be provided. Anticipated costs of the installation procedures and services that must be provided by Precede Enterprises, Inc. are defined in this document.

## 3 Lighting Installation Services

- Labor (Union/Non-Union)
- Ordering materials
- Receiving deliveries
- Obtain necessary permits
- Disposal of the existing lighting
- Project completion review
- Submit close-out documentation
- Coordinate warranty services

*One Company, One Contact...call* **866-465-6742**

# Turnkey Customer Benefits



- One contact for all Turnkey Installation responsibilities: (i.e. installation, permits and warranties)
- Local facility staff personnel are not required to manage the installation
- Provides the assurance that there is continuity of products and services
- Lighting design that meets the customer's requirements
- Maximized energy savings without compromising light level requirements
- Full accountability: Holophane and Precede Enterprises, Inc. warrant the luminaires and the installation
- Ability to coordinate construction around site process
- Rapid execution per the customer's requirements



One Contact Project Management  
+ Full accountability  
+ Expert design & audit  
+ Labor provided  
+ Rapid installation  
+ Continuity of service  
= **SAVINGS**



To locate your local Holophane Sales Representative and learn more about Holophane Turnkey Services, please call the Holophane Corporate Office at

**866-465-6742**

Ask for the National Accounts Coordinator to receive contact information and an introductory e-mail from your Holophane Representative if requested.





# 1 2 3

*One Contact...One Company  
for Incomparable Service*

*Rely on Holophane to be your  
Turnkey Lighting Installation Provider  
Call 866.465.6742*



An **AcuityBrands** Company

**Acuity Lighting Group, Inc.**

214 Oakwood Ave., Newark, OH 43055  
Holophane Canada, Inc. 9040 Leslie Street,  
Suite 208, Richmond Hill, ON L4B 3M4  
Holophane Europe Limited, Bond Ave., Milton  
Keynes MK1 1JG, England  
Holophane, S.A. de C.V., Apartado  
Postal No. 986, Naucalpan de Juarez,  
53000 Edo. de Mexico

**Contact your local Holophane factory sales representative** for application assistance, and computer-aided design and cost studies. For information on other Holophane products and systems, call the Inside Sales Service Department at 740-345-9631. In Canada call 905-707-5830 or fax 905-707-5695.

**Limited Warranty and Limitation of Liability** Refer to the Holophane limited material warranty and limitation of liability on this product, which are published in the "Terms and Conditions" section of the current buyers guide, and is available from our local Holophane sales representative.

Visit our web site at [www.holophane.com](http://www.holophane.com)